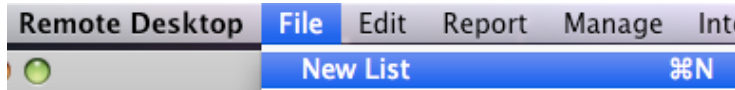


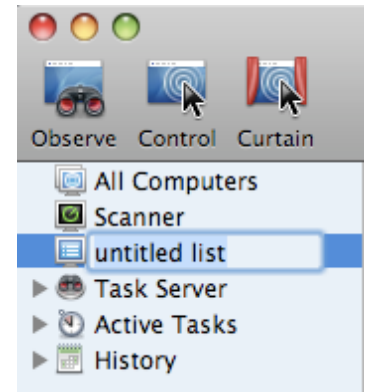
Using Apple Remote Desktop



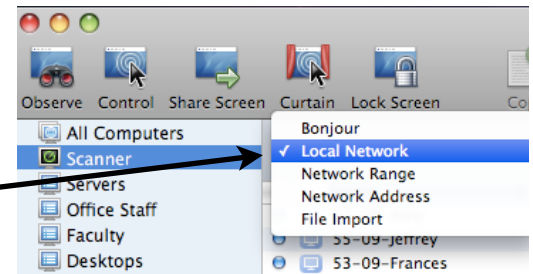
1. Open Remote Desktop.
2. From the file menu, create a New List to store your remote selections or choose + from the bottom left window.



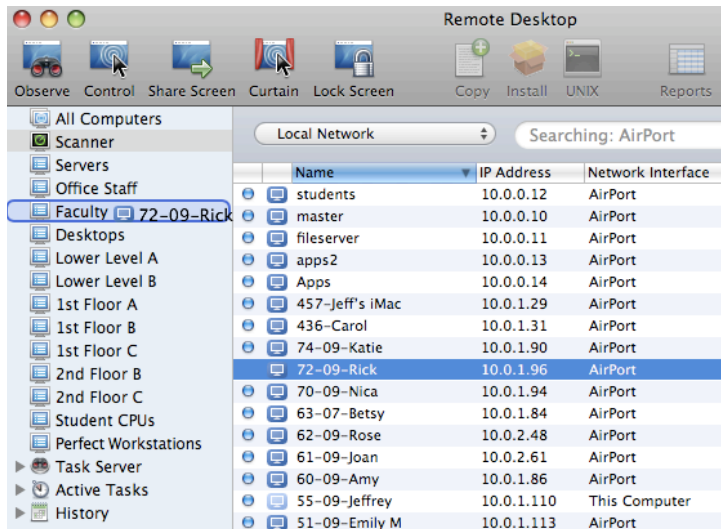
3. Title your list.



4. Find the computers to access remotely by clicking on the Scanner icon.

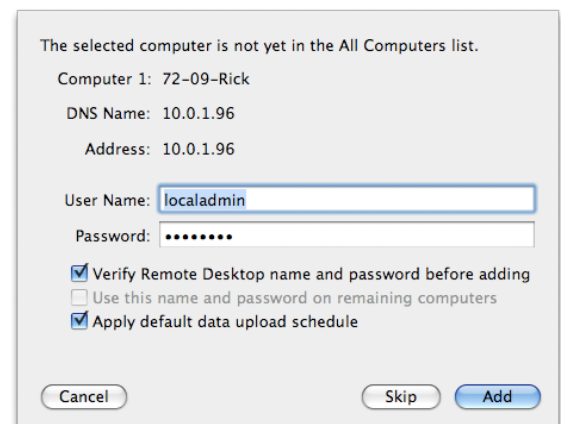


5. Choose local network.



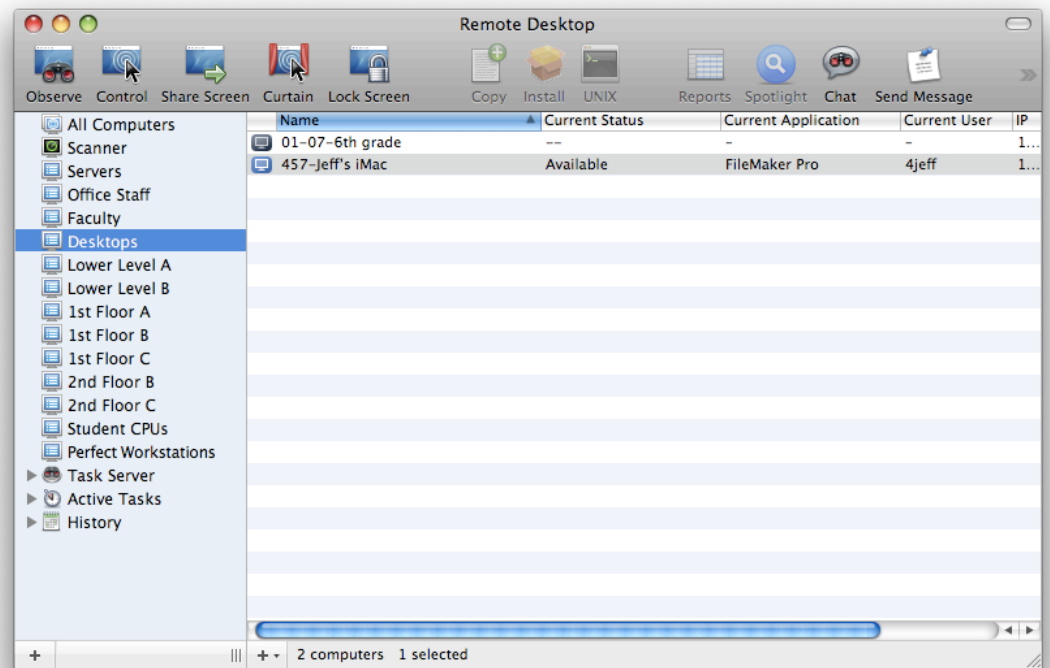
6. When you find the computer you would like to add, you can click and drag it into your group list.

7. You will need to type in the localadmin user name and password to have access to each computer you add to your list.



8. Once you see your selection(s) in your list, you can tell if the computer is available as the screen image to it's right will be blue and it will say available under current status.

You can Observe, Control, Share your screen or lock their screen. An icon of each is in the top menu and under the Interact menu bar.



9. After you choose how you would like to interact with the other computer, you will see a connecting to screen.

HINT: Using ARD from home (after connecting via VPN) or using it wirelessly will cause the program to work slower.

10. You will then see the desktop of the other screen.



HINT: ARD will work much faster if you choose to view the screen without color by moving the scroll bar to the left.

11. When you are done, close the screen by clicking the red button and quit the program.